

Selected ERM Experience working with International Project Finance Standards



ERM has a wide range of experience of working on Environmental and Social Impact Assessment and the development and implementation of Social and Environmental Risk Management Procedures and Plans.

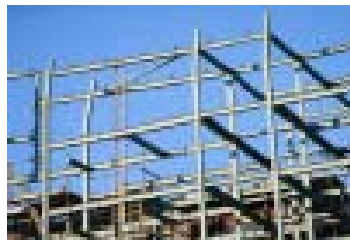
ERM regularly assists project developers to undertake Environmental and Social Impact Assessments and to develop and implement stakeholder engagement and public disclosure strategies to World Bank and IFC standards.

ERM also assists project lenders to examine projects to determine their compliance with the Equator Principles. The Equator Principles are a voluntary set of guidelines that are supported by standards and guidelines of the World Bank and IFC.

Furthermore, ERM regularly works with multilateral lending agencies and private banks to develop and implement social and environmental risk management procedures. This has included work for the International Finance Corporation (IFC), the Inter-American Investment Corporation, the European Bank for Reconstruction and Development (EBRD), the Inter-American Development Bank (IADB), the World Bank (WB) and the Asian Development Bank (ADB) as well as private-sector banks receiving funds from these agencies.

A selection of recent relevant experience is provided overleaf in terms of

- **The Equator Principles and Project Finance Due Diligence**
- **Environmental and Social Impact Assessments (ESIAs) to World Bank/IFC Performance Standards**
- **Multilateral Development Agency Guidelines & Strategic Advice**

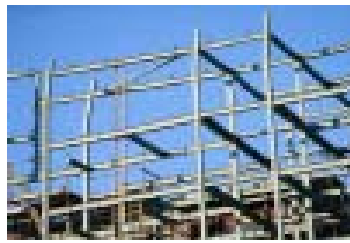


The Equator Principles and Project Finance Due Diligence

The Equator Principles, originally adopted in June 2003 has been revised into what is known as EP2 in July 2006, which have now been adopted by over 40 banks. ERM has already been commissioned to work on a number of projects for these signatory banks globally acting as Independent Environmental and Social Consultant. ERM also undertakes due diligence on behalf of multilateral agencies against their internal standards and guidelines.

EURASIA

- Review and Gap Analysis of Railroad in Kazakhstan. A Kazakh logistics company has been awarded to construct 300km new railway and needs to raise 70-90% of the \$1billion cost by Project Finance. An EIA undertaken by government railway agency was completed to local standards. ERM reviewed the EIA and other documents against Equator Principles, Kazakh legislation and Asian Development Bank (ADB) requirements and prepared an action plan to bring the Project into compliance. Following completion of Action Plan ERM assisted in bringing the project in compliance is including public consultation and development of a Social and Health Impact Assessment and Public Consultation and Disclosure Plan.
- Review and Gap Analysis of Berezitovy Gold Mine ERM Eurasia completed a Data Gap Analysis to review design documents prepared by OOO "Berezitovy Gold Mine" in order to assess whether the data submitted was consistent with the EBRD's Environmental Policy and Procedures with regard to preparation of substantiating environmental documents for projects to be financed by the EBRD.
- Review and Gap Analysis of Eureka Mining plc Copper Ore Project in Chelyabinsk region. ERM supported Eureka Mining plc in conducting an EIA based in the Chelyabinsk region of Russia. The scope of work included preparation of a comprehensive Gap Analysis Report for bankable/Russian EIA Preparation;
- Review and Gap Analysis of aluminium production site ERM was appointed to conduct an Environmental and Social Due Diligence in order to identify non-compliance with Russian and Equator Principles and potential environmental and social risks related to construction and operation of aluminium production site in Russia.
- Oil Rig Construction, Fit out and Operation, Russia, UK & Mexico. ERM was commissioned to undertake an Environmental and Social Gap Analysis of the construction and operation of two 6th generation oil rigs against the Equator Principles and ECGD requirements. The Project which was valued at \$0.5bill included construction of hull in Russia, fitting-out in the UK and operation in the Gulf of Mexico.
- Review and Gap Analysis of Underground Coal Mine. ERM was commissioned to act as the independent environmental and social consultant related to the financing of a bituminous underground coal project in Russia. ERM assessed the compliance of the Russian project development plan against the Equator Principles and Korean Export Credit Agency requirements, and produced a gap-analysis and risk report, and action plan.
- Review and Gap Analysis of Gas Field Development, Siberia. ERM was commissioned to undertake an Environmental and Social Due Diligence Assessment of Russian Project documentation against the Equator Principles for one of the largest gas developments in Russia. The Project is estimated to cost \$2billion and is located in the Arctic Circle in an area of high environmental sensitivity and location of indigenous populations.
- Review and Gap Analysis of two Greenfield Zinc-Lead Mines. ERM was commissioned to undertake an Environmental and Social due diligence gap analysis of \$1billion Project to develop and operate two proposed Greenfield zinc-lead mines in Russia, one of which is in the catchment of Lake Baikal, and area of significant environmental interest. ERM was also commissioned to include information in Project documents for private placement sale to Tier 1 hedge funds in London.
- Review and Gap Analysis of St Petersburg Western High-speed Diameter.. This is the First Private/Government Concession Initiative in Russian Federation and includes a motorway which would run across the western part of historical centre St. Petersburg, connecting northern, central and southern districts, across the Neva bay through cultural heritage sites. ERM was commissioned to undertake a gap analysis between the existing Russian Project environmental studies and international requirements including the Equator Principles, IFC, EBRD and NIB requirements. ERM also prepared a Public Consultation and Disclosure Plan for people affected



- in the course of the economic displacement and resettlement of commercial facilities.
- Review & Gap Analysis of Social Impact Assessment, Sakhalin Energy Phase II, Sakhalin Energy Investment Company Ltd (SEIC) ERM completed a review of the social impact assessment for a proposed oil and gas pipeline (both desk-based and in-country). The work involved a technical review and edit of the existing SIA report and identification of key gaps. Impact and mitigation workshops were held in the Netherlands to support this process.
 - Environmental and Social Due Diligence Assessment of Russian Project documentation for gas field development for Western banks against compliance to existing and reasonably foreseeable relevant local and international environmental regulations (IFC/Equator Principles/EU).
 - Lavna Oil Products Terminal in Murmansk region: Gap Analysis, EIA and PCDDP for Sintez-Petroleum in accordance with OPIC requirements. Our specialists conducted the gap analysis of the environmental protection documentation and developed an Environmental and Social Impact Assessment in the format required by Overseas Private Investment Corporation.

EUROPE MIDDLE-EAST & AFRICA

Potash Mine, Russia, 2010. ERM was commissioned to act as the independent environmental and social consultant related to the financing of a underground potash mine in Southern Russia. ERM assessed the compliance of the Russian project development plan against the Equator Principles and South African Export Credit Agency standards and guidelines.

Oil Refinery, Egypt. ERM was commissioned to undertake an Environmental and Social Due Diligence Review of the Project ESHIA against the requirements of the Equator Principles as the lender's independent environmental and social advisor. ERM has also been commissioned to conduct the monitoring of the project through the construction period.

Oil Rig Construction, Fit out and Operation, Russia, UK & Mexico, 2009. ERM was commissioned to undertake an Environmental and Social Gap Analysis of the construction and operation of two 6th generation oil rigs against the Equator Principles and ECGD requirements. The Project

which was valued at \$0.5bill included construction of hull in Russia, fitting-out in the UK and operation in the Gulf of Mexico.

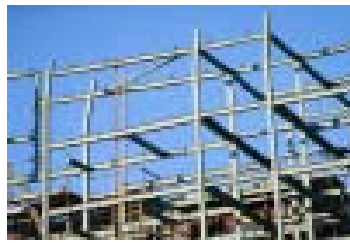
Underground Coal Mine, Russia, 2009. ERM was commissioned to act as the independent environmental and social consultant related to the financing of a bituminous underground coal project in Russia. ERM assessed the compliance of the Russian project development plan against the Equator Principles and Korean Export Credit Agency requirements, and produced a gap-analysis and risk report, and action plan.

Oil refinery, Egypt, 2009 Project managed an EIA Review and Environmental and Social Due Diligence of upgrading units in Egypt on behalf of JBIC and NEXI including document review, questionnaire preparation, site visit, interview, monitoring report preparation and reporting.

Gas Field Development, Siberia, 2009. ERM was commissioned to undertake an Environmental and Social Due Diligence Assessment of Russian Project documentation against the Equator Principles of one of the largest gas developments in Russia. The Project is estimated to cost \$2billion and is located in the Arctic Circle in an area of high environmental sensitivity and location of indigenous populations.

Railroad, Kazakhstan 2009 A Kazakh logistics company was awarded Commission to construct 300km new railway and needs to raise 70-90% of the \$1billion cost by Project Finance. An EIA undertaken by government railway agency was completed to local standards. ERM reviewed the EIA and other documents against Equator Principles, Kazakh legislation and Asian Development Bank (ADB) requirements and prepared an action plan to bring the Project into compliance. Following completion of Action Plan ERM assisted in bringing the project in compliance is including public consultation and development of a Social and Health Impact Assessment and Public Consultation and Disclosure Plan.

Two greenfield Zinc-Lead Mines, Russia, 2008. ERM was commissioned to undertake an Environmental and Social due diligence gap analysis of \$1billion Project to develop and operate two proposed greenfield zinc-lead mines in Russia, one of which is in the catchment of Lake Baikal, and area of significant environmental interest. ERM was also commissioned to include information in Project documents for private placement sale to Tier 1 hedge funds in London.



Full Field Development, Algeria, 2008. ERM was commissioned to undertake an Environmental and Social Due Diligence Review of the Project ESHIA against the requirements of the Equator Principles. The Project included construction of a Central Processing Facility, drilling a number of development wells, construction of two export pipelines and associated support infrastructure

Sakhalin Energy Phase II pipeline, Russia, 2008 ERM completed a review and gap analysis of the social impact assessment for the Sakhalin oil and gas pipeline (both desk-based and in-country). The work involved a technical review and edit of the existing SIA report and identification of key gaps. Impact and mitigation workshops were held in the Netherlands to support this process.

Transmission Line, South Africa, 2007 JBIC was in negotiations with Eskom, the South African electricity utility, regarding the provision of loan finance for the two projects constructing transmission lines. Prior to concluding such a loan agreement, JBIC has appointed ERM to assist with the investigation to identify and assess potential environmental and social risks that may influence the provision of loan finance.

ASIA-PACIFIC

Oil refinery, India, 2009 Project managed an EIA Review and Environmental and Social Due Diligence of upgrading units in India on behalf of JBIC and NEXI including document review, questionnaire preparation, site visit, interview, monitoring report preparation and reporting.

Oil refinery, Republic of Korea, 2009 Project managed an EIA Review and Environmental and Social Due Diligence of upgrading units of oil refinery in Korea including document review, questionnaire preparation, site visit, interview, monitoring report preparation and reporting.

Gas Transmission Pipeline, Indonesia. ERM was engaged to review the environmental and social compliance of sub sea gas transmission pipeline. The work includes review of the available documentation against the Equator Principles and local regulatory requirements and the preparation of recommendations for appropriate requirements in the term sheet and financing documentation.

Cement Production Plant, South-East Asia. ERM was engaged by an Equator Signatory bank to review a US\$ 100 million loan to expand an existing cement production

plant. The work involved a site visit, review of existing environmental and social documentation and the development of recommendations for remedial action to bring the project into compliance with national standards and the bank's lending policies.

Mining Project, South-East Asia. ERM was contracted to review the environmental and social impacts of a new mining development in South-East Asia. The work involves review of the ESIA, Resettlement Action Plan and Public Consultation and Disclosure Plan as well as the development of project specific conditions for the financing of the project.

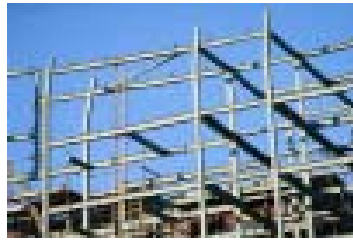
Resort Complex, North Asia. ERM was contracted to review a major resort development to identify whether or not the project had been developed in accordance with the Equator Principles. As a result of this review, additional assessment of the environmental and social impact was recommended, and an Environmental Management Plan developed.

LNG development, South-East Asia. This project was for a consortium of financial institutions that included Equator Signatory Banks. ERM provided assistance in managing and reviewing the environmental, economic and social aspects of their involvement and is providing technical assistance to the lenders, their lawyers and other advisors.

Trans-national gas development in South-East Asia. ERM is providing technical advice to an Equator Principles signatory bank on a major gas development (pipeline and gas terminal) that involves two south-east Asian nations. ERM provided project opinions, technical input and assistance in drafting conditions precedents and covenants as is currently providing ongoing support in monitoring the implementation of lending conditions.

Airport Privatisation, India. ERM was contracted to perform a review of India's environmental, health and safety (EHS) requirements against those of the Equator Principles. The purpose of the review was to identify any additional EHS requirements that seeking finance from Equator banks would bring to the funding of the privatisation of an airport in India.

Gold and Copper Mine Project, SE Asia. ERM provided a desktop review of documentation associated with refinancing of a major mining operation in South East Asia. The review compared the current operations against World Bank and IFC standards.



Methanol Production Plant, SE Asia. ERM reviewed an EIA of an methanol production plant against the requirements of the Equator Principles and JBIC. The review resulted in the preparation of a Terms of Reference for an upgraded EIA to meet these international standards.

Selected ERM Experience working with International Project Finance Standards



AMERICAS

Copper mine, Republic of Chile, JBIC, 2009 Project managed an EIA Review and Environmental and Social Due Diligence of Los Pelambres Copper mine in Chile including document review, questionnaire preparation, site visit, interview, monitoring report preparation and reporting.

Hydro electric power plant, Colombia, 2008 EIA review and Environmental and Social Due Diligence of Hydro electric power plant, Colombia, April to September 2008 ; Project managed an EIA Review and Due Diligence of Fertilizer Plant in Turkmenistan on behalf of JBIC, including document review, questionnaire preparation, site visit, interview, monitoring report preparation and reporting.

Methanol plant, Venezuela, 2007 JBIC appointed ERM to review an Environmental and Social Impact Assessment (ESIA) of the Methanol plant expansion project of the Metanol de Oriente (METOR) plant in Venezuela based on the JBIC guideline for Environmental consideration in the negotiation process of a loan agreement.

Environmental and Social Impact Assessments (ESIAs) to WB/IFC

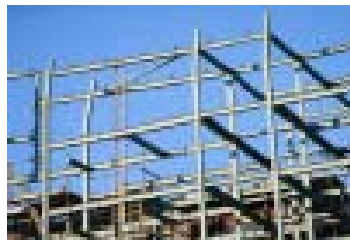
ERM has wide experience in the preparation and management of ESIAs as well as a wide range of technical inputs including: socio-economic assessment, public consultation and risk assessment as well as the more typical environmental inputs. This experience encompasses six continents and over 160 countries.

Bangladesh: ESIA of a Cement Works and Limestone Quarry, Lafarge.

The ESIA was carried out as part of Lafarge's application for IFC funding and was therefore carried out in compliance with IFC requirements. Key issues were resettlement compensation and air quality. The aim of the project was to prepare a RAP and EIA to fulfil IFC project financing requirements. The project covered a cement works in Bangladesh and associated limestone quarry across the border in India. ERM were also required to produce a separate Social Impact and Mitigation Plan, which covered the acquisition of land for the development, the resettlement of people, and appropriate compensation. In consultation with Lafarge Surma Cement, ERM also recommended social development initiatives that would form the overall compensation package including a new primary school and primary health care facilities. In preparing this report to IFC standards, the consultants carried out public consultation around the plant site to ensure the comprehensive identification of impacts occurred and to address any concerns that local residents had.

Bangladesh: ESIA of Proposed Gas Development, Occidental International Exploration & Petroleum Company and International Finance Corporation (IFC).

ERM was commissioned to conduct an environmental and social impact assessment of a proposed gas pipeline and test facility in north-east Bangladesh. The EIA focused on assessing the potential impacts of the drill sites, selecting the preferred pipeline route and site for the production facility, in order to produce an Environmental Management Plan which could be inform, train and control contractors with regards to reducing



environmental impacts and minimising the effects on local communities. In addition, a social impact assessment was conducted which involved designing and conducting a consultation programme.

India: ESIA for Transmission Line, Asian Development Bank (ADB).

ERM carried out environmental and social impact assessments for a 400 kV, 600 km D/C Power transmission line from Bina – Nagada and Degham in the states of Gujarat and Madhya Pradesh. In addition, a comprehensive environmental action and management plan was also prepared. The project was undertaken as per ADB guidelines.

India: ESIA for Sarshatali Coal Mining Project, West Bengal, CESC.

ERM was commissioned by Calcutta Electricity Supply Company (CESC) Limited to review and modify an existing ESIA and EMP study to comply with IFC guidelines. The project was commissioned in order to seek financial assistance from International Financial Corporation (IFC).

India: Social Impact Assessment for the Proposed 2x250 MW Thermal Power Plant in Balagarh, West Bengal, IFC.

ERM conducted a social impact assessment of the proposed 500 MW thermal power project in Balagarh. The project assessed the nature and extent of impacts on the local community. The project was being funded by the International Finance Corporation. Through a combination of sample socio-economic surveys, consultations and other participatory methods, ERM assessed impacts, both to physical assess and land, as well as on livelihoods, both direct and indirect. A detailed Resettlement and Rehabilitation Action Plan for prepared that outlined entitlements against categories of losses, rehabilitation assistance for the project affected to rebuild their homes and livelihoods as well appropriate institutional and grievance redress mechanisms. ERM also developed a Public Consultation and Disclosure Plan for the project proponents as per the IFC guidelines.

India: ESIA of 192 MW Allain Duhangan Hydel Project in Himachal Pradesh, IFC.

The Allain Duhangan Hydroelectric Project (ADHP) is a proposed 192 MW hydropower facility on the tributaries of Beas river (viz; Allain and Duhangan) in the Kullu district

of Himachal Pradesh in India. ERM was asked to prepare an ESIA to fulfil the requirements of IFC's Review of the project. ERM's scope included strengthening of the ESIA Study, undertaking seven specialised studies including studies on hydrogeology, fisheries, dam safety and social impacts, and preparing the consolidated ESIA reports as per IFC requirements.

Indonesia: ESIA of the South & Central Kalimantan Production Forest Project, European Commission.

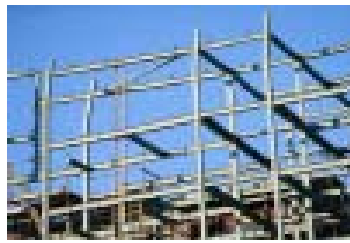
ERM undertook an Environmental and Social Impact Assessment (ESIA) of the South and Central Kalimantan Production Forest Project (SCKPFP). The overall aim of the SCKPFP is to help the Government of Indonesia manage, in a sustainable manner, its production forests thereby enabling it to fulfil its commitment to implement the International Tropical Timber Organization's (ITTO) guidelines for Global Sustainable Management. The key objective of the ESIA was to deliver an expert assessment of the environmental, social and cultural impacts and opportunities of the SCKPFP. The assessment examined the extent to which the environmental and social issues, impacts and opportunities can be addressed, prevented and/or mitigated during Phase II of project implementation and how the project could be improved to maximize its environmental and social sustainability.

Egypt: EIA for EDF Port Said East Power Station SAE, Centre National d'Equipement Thermique

In order for EDF to receive financial approval from the IFC for their proposed power plant being built East of Port Said on the Mediterranean Sea, ERM were contracted to prepare an EIA to IFC standards and to Plan and undertake the Public Consultation process as required by the IFC. The proposed gas-fuel oil fired power station has a capacity of 341 MW, which will be designated as a Category A project by the IFC. A team of consultants worked with local counterparts Environmental Resources (Egypt) in order to carry out the EIA and associated procedures.

Hungary: EIA of Three Potential Gas Turbine Power Stations, Hungarian Electricity Board (MVMT) and K & M Engineering.

ERM participated in the EIA component of a major Feasibility Study to select two out of three potential sites for the installation of gas turbine plant either in addition to or instead of existing conventional plant. The sites were compared on engineering, environmental, strategic and



cost criteria. The EIA was carried out in accordance with World Bank Guidelines, (including the requirement to carry out public consultations) in support of MVMTs application for an investment loan for the project. Two of the potential sites were Budapest and Debrecen.

Oman: Social Impact Assessment for Petroleum Development Oman

The assessment involved consultation with national ministries, local leadership and the local Bedouin community. Key issues evaluated were the effect of the development on the semi nomadic lifestyle, disruption of livestock grazing patterns, opportunities through employment and distribution of benefits and management of local expectations. Findings from the assessment formed the basis for development of management plans, community relations strategy and a social investment plan.

Angola: Environmental, Social and Health Impact Assessment for LNG Plant

ERM was originally commissioned to carry out a gap analysis of the environmental and social work carried out to date for the Angola LNG Project. Subsequently, ERM was asked to carry out the pre-ESHIA environmental and socio-economic work. For this, ERM recently completed the environmental and socio-economic data collection as part of the site selection and scoping work. This has involved: 1) socio-economic surveying of settlements, fishing activities, cultural sites; 2) a series of consultation meetings with decision makers, leaders and local communities; and 3) environmental data gathering (eg mangrove quality, river geomorphology). ERM fed this information to the site selection decision making process through highly visual analysis reports and presentations. ERM has been working closely with local consultants in Angola throughout this work.

Bangladesh: EIA Meghnaghat 450 MW CCGT Phase II Power Project, Marubeni Power Sys. Corp., Japan, ADB co-financing. ERM Lahmeyer conducted an EIA for a 450 MW combined cycle gas-turbine (CCGT) power station at the Meghnaghat site, located on the northern shore of the Meghna River, 25 km southeast of Dhaka, Bangladesh. The power plant will be developed as a BOO or BOOT project by the Marubeni Corporation. As the Project will be the second phase of the development of thermal power generating capacities at the Meghnaghat site of the Bangladesh Power Development Board (BPDB), special attention was given to the evaluation of cumulative

impacts from the additional environmental releases of the Project. Beside impacts on air quality, noise impact on neighboring villages, the fish entrainment and impingement impacts of the CW intake and the consequences of the CW discharge heat plume were main issues of concern. The EIA Report was to serve as the main input for the environmental appraisal of the Project by the Asian Development Bank (ADB), other possible international financiers and the Government of Bangladesh for the Environmental Clearance.

Vietnam: Summary Environmental Impact Assessment for a Bitumen manufacturing and distribution plant project for a multinational oil company. ERM conducted a review of an EIA report, prepared by a local consultant, and developed a summary EIA, which was submitted to the Asian Development Bank (ADB) for loan approval. The summary met the requirements of the ADB environmental impact assessment guidelines.

China: SIA for SECCO Industrial Development, BP

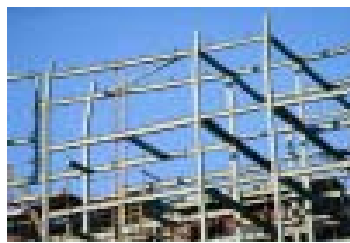
ERM is currently undertaking a social impact assessment for a proposed industrial development in China. The project includes overall coordination of the SIA, the development of a socio-economic baseline, the assessment of impacts and development of mitigation measures. A key focus will be on designing and developing appropriate consultation processes and ensuring a clear understanding of the boundaries of responsibility and perception with respect to impacts arising from BP and impacts arising from the industrial development as a whole.

Iran: ESIA for a Petrochemical Development, Confidential Client

ERM is currently undertaking an integrated ESIA for a proposed petrochemical facility in Iran. ERM is co-coordinating the ESIA, and a key responsibility involves partnering with a local consultancy to develop their capacity to collect baseline data and undertake stakeholder consultation. A specific focus for ERM is to ensure that the ESIA team and local consultants collectively assess impacts and develop mitigation measures, as a means of skills transfer. A particular challenge has been to develop a stakeholder consultation programme that is appropriate to the socio-cultural environment of Iran.

Malaysia: Environmental, Social & Health Assessment (ESHA) of a Proposed Gas to Liquids Plant

ERM was commissioned to prepare a comprehensive



ESHA study for a major investment project to meet with the requirements of the Malaysian environmental authorities, Shell Group policy and the World Bank.

Mexico: ESIA for LNG Project, Shell

ERM provide the social and health input into an integrated ESIA for a proposed LNG project in Mexico. This has focused on the identification of impacts and mitigation measures including a social & health management and monitoring plan for a marine terminal and pipeline through Northern Mexico. Consultation has been undertaken at the local, district, provincial and national level. ERM was also involved in managing the public disclosure process.

Vietnam: Initial Environmental Examination (IEE) of the sample feasibility study for strengthening sections of the Duong River dykes, under the ADB's Red River Basin Water Resources Sector Project (2001). ERM conducted an IEE of flood protection sub-project, which involved undertaking various activities to rehabilitate the dyke in areas of risk. The two dykes along the Duong River protect a large area that plays a key role in the socio-economic development of the northern region of the Red River Delta. The objectives of the IEE were to: determine the state of the environment in the project area; identify key environmental issues and likely impacts associated with the subproject; and to recommend mitigation measures.

Azerbaijan, Georgia and Turkey: Social Impact Assessment for Shah Deniz and BTC Pipelines, BP.

ERM undertook a major social impact assessment for the proposed pipeline development in Azerbaijan, Georgia and Turkey. The first phase of this 1700 km long project involved development of a socio-economic baseline and consultation with over 500 communities that were identified as likely to be affected. This was carried out with national partner organisations in each country. The project involved extensive negotiation with pipeline engineers and project managers regarding the development and implementation of effective mitigation measures, the design of management plans, management systems, mechanisms for managing community relations, training of project and contractor teams, production of communications material for a number of different audiences, public meetings etc. The work was carried out to World Bank standards. Several ERM staff were seconded to BP for lengthy periods during the

development of the project. Additional support was provided for the development of a RAP.

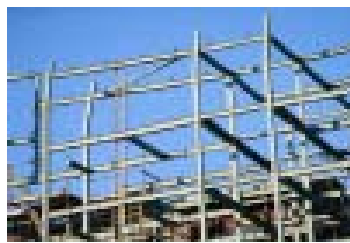
China: Environmental & Social Impact Assessment, West to East Pipeline, Shell.

The 4000km West to East Pipeline is one of the largest and most complex projects in China. ERM was engaged to undertake a gap analysis between Chinese and International ESIA standards, and then to undertake an international ESIA. ERM Australia personnel led the social team that covered issues including impact analysis, mitigation, resettlement and livelihood issues, construction management, minority groups, consultation and the development of the Social Action Plan.

Peru: Environmental and Social Impact Assessment of Appraisal Drilling Campaign for the Camisea Gas Fields. ERM was commissioned to conduct a detailed environmental and social impact assessment of the proposed Appraisal Drilling Campaign (ADC) for Block 88B of the Camisea gas fields, located some 500 km east of Lima. The ESIA evaluated potential impacts associated with the logistics programme, construction and operation activities, as well as focusing on the socio-cultural conditions and the potential social impacts caused by the ADC. This EIA is part of the first step in an extended programme of consultation, research and analysis leading to sustainable development of the Camisea gas fields. A key output of the EIA was the production of an Environmental Management Plan (EMP) which could be used to inform, train and control contractors with regards to reducing environmental impacts and minimising the effects on local communities.

Uzbekistan: Environmental and Social Impact Assessment for Improving Drainage in the Amu Darya Basin, EU Tacis/ World Bank. As part of the World Bank-financed Uzbekistan Drainage Project (Aral Sea Basin Program), ERM undertook a complex two-phase Environmental and Social Impact Assessment for the construction of a proposed 300-kilometre main collector drain to carry excess drainage water from South Karakalpakstan toward North Karakalpakstan and the Aral Sea. The project was intended to improve farming conditions for some 400,000 people in an area of 100,000 ha, but had potentially adverse impacts on smaller herding and fishing communities to the north of the project area.

Azerbaijan: Environmental & Social Impact Assessment, Cement Kiln Project. ERM was



commissioned to undertake an ESIA for the modernisation of the plant and new cement kiln project to international lenders standards including baseline surveys and modeling, and a SIA which focused on retrenchment and construction worker issues, and a public consultation and disclosure program.

Multilateral Development Agency Guidelines & Strategic Advice

Integration of Social Issues into EIA guidelines for World Bank Task Managers and national government clients, World Bank. ERM was contracted to rewrite the EIA guidelines for the Middle East / North Africa region of the World Bank to ensure effective integration of social issues management. Specific terms of reference included were for Financial Intermediaries, social investment funds as well as major public sector financed infrastructure projects.

Development of an EIA and Strategic Environmental Assessment (SEA) System for the Lower Mekong Basin, Mekong River Commission. ERM were commissioned to develop a system, policy and supporting guidelines for project, plan and programme-level EA. Following a review of EA systems in place in the countries of the Lower Mekong Basin (Vietnam, Cambodia, Thailand and Laos), and numerous workshops and seminars with government stakeholders in these countries, ERM developed an EA system that would be applied when development activities are likely to have trans-boundary impacts. The system and tools (e.g. guidelines on EA, SEA, cumulative effects assessment, public participation, EIS review etc.) focused on water resources activities such as hydropower, ports and harbours, navigation, irrigation, fisheries, flood management and human health.

Preparation of Guidelines for Infrastructure Projects, the Inter-American Development Bank, Private Sector Department. ERM was asked to prepare of a series of reporting guidelines and sector issue guidelines which the IDB use to identify risks and supply to prospective borrowers to clarify issues and improve the quality of information submitted during the due diligence process. The project produced 8 reporting guidelines and sector issues for 11 sectors.

Review of Public Consultation and Public Disclosure Performance, International Finance Corporation.

The IFC commissioned ERM to undertake a review of the

performance and effectiveness of public consultation and public disclosure undertaken by its private sector clients. The ERM team undertook a review of 10 case studies, in sectors such as mining, oil/gas and power to assess whether the project sponsor had responded to the IFCs public consultation/public disclosure policies and whether the resulting programme had been effective. The team also produced a Manual on Public Consultation for use by project developers.

Source Book Reviews for EIAs, The World Bank.

ERM staff prepared subsector reviews for The World Bank for the following topics in the Bank's new environmental source book on: agroindustry, fisheries (marine, inland, aquaculture/ mariculture), inland navigation, ports and harbours, tourism and nine specific industrial categories including agroindustry, fertilizer manufacturing, non-ferrous metals, iron and steel, pulp and paper, cement, petroleum refining, food processing and large manufacturing. Source book material identified key environmental impacts and their mitigatory measures for each sector.

International Environmental Guidelines for Export Credits, Export Credit Guarantee Department.

ERM advised the UK Export Credit Guarantee Department (ECGD) on options for the incorporation of environmental guidelines into their decision-making processes. The results of the study were used to assist ECGD in discussions in the OECD Export Credits Group.. As a result of this process, the team provided further guidance to ECGD on developing its Environmental Procedures for assessing the environmental impacts of the exports it supports.